



THE FOUNDRY

A PLACE TO WORK, MEET AND
MAKE CHANGE HAPPEN

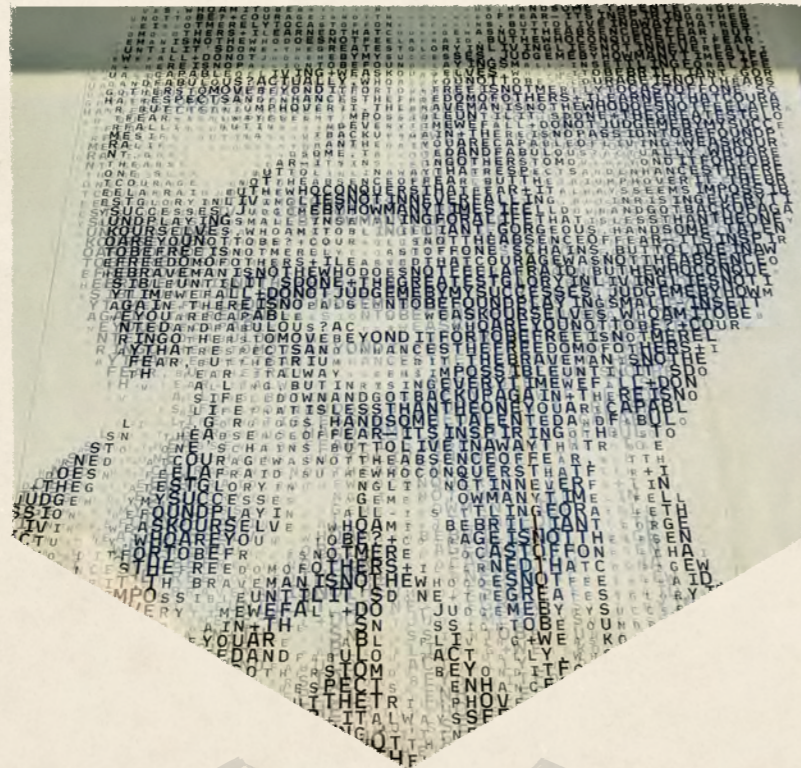


ABOUT

Welcome to The Foundry, a fully serviced workspace, conference and events centre just a short walk away from Oval and Vauxhall underground stations in South London.

The Foundry is a buzzing place where likeminded organisations come together to share ideas, collaborate and make change happen. Having started life as a shoe-polish factory, in 2014 the building was successfully redeveloped into a beautifully light and spacious workplace, winning it 'London Building of the Year' at the prestigious Royal Institute of British Architects' (RIBA) awards.

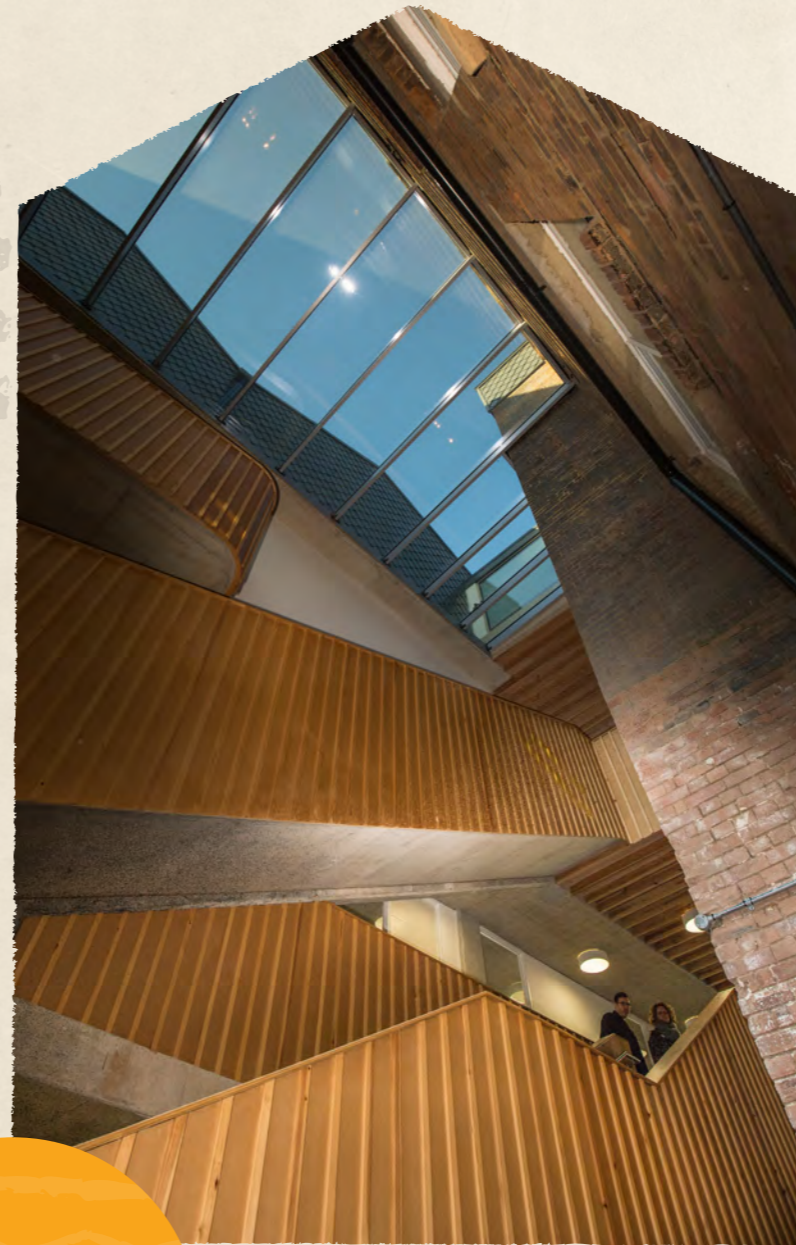
A truly exciting and dynamic social justice centre, The Foundry hosts a wide-ranging programme of events, many of which are delivered by our incredible mix of tenants. We know change doesn't happen in silos, which is why there's a fantastic array of breakout spaces, including several roof terraces and an on-site café, along with our bigger conferencing and exhibition areas. This makes it the ideal place for developing those vital relationships, promoting your latest campaign and shining a light on your progressive agenda.



BREEAM-rated 'Excellent' for its sustainable design and operation, The Foundry is a joint venture between Trust for London, Joseph Rowntree Charitable Trust, The Barrow Cadbury Trust, LankellyChase Foundation and The Ethical Property Company.

A place to work, a place to meet and a place to make change happen.

Come on in and take a look!



“Great community venue with a social model at its heart. Easy access and good meeting spaces.”

Centre user,
Google Reviews



WORKSPACE

The Foundry brings together progressive social justice and human rights organisations that make a difference at local, national and global levels.

Tenants benefit from working alongside and sharing ideas and resources with likeminded people. The Foundry encourages tenants to network through a programme of social events including gardening and cycling clubs, beekeeping, yoga, language classes and recycling workshops, to name a few. More formal collaboration takes place through the HR & Operations Group and the Social Media Group.

The office space is fully serviced by Ethical Property, a forward-thinking company that believes property should be used in the best interests of society, the planet and the economy.

With spaces available suiting anywhere from five to fifty people, you are sure to find your perfect fit. Our inclusive rental charges cover centre maintenance and management, including

reception services, cleaning, waste and recycling, fire and security provision, phone line rental and broadband access.

We're flexible too, offering the security of a midterm lease with the option of notice periods of between 2 – 6 months (depending on the size of unit).



Facilities

- Hireable meeting room, conference and event spaces
- Fully accessible
- Secure, 24/7 access
- On-site management team and staffed reception
- Roof terraces
- Tea points and breakout spaces
- On-site café
- Free-to-use meeting rooms
- Superfast broadband and WiFi
- Videoconferencing
- Secure bike racks
- Showers
- Lifts

Ethical Property is a forward-thinking company that believes property should be used in the best interests of society, the planet and the economy.

www.ethicalproperty.co.uk/office-space/south-london/the-foundry
To find out more, call 0330 016 3440
Email sales@ethicalproperty.co.uk



The Foundry is committed to engaging the public on social justice and human rights issues, and to enriching the lives of people living in the local community.

COMMUNITY ENGAGEMENT

Equalities Work, a charity based at the centre, organises talks, film screenings, workshops and exhibitions that promote education, discussion and reflection from an equality and diversity perspective. Its activities ensure that people interested in human rights and social justice issues feel welcome to visit The Foundry, use the resources, and find out more about the challenges facing society and what they can do in response.

The centre is also working to increase biodiversity through the use of its outdoor spaces – and to help spread the message on why this matters so much. For example, in partnership with the London Beekeepers Association, staff and tenants are running a beekeeping project to promote sustainable urban beekeeping in the wider community, including working with local schools.



If you want to learn how The Foundry can help with your community project, please email thefoundry@ethicalproperty.co.uk

“The beehive project is a great way of giving something back to the community while raising awareness of the importance of the survival of bees and the role they play within the local ecosystem.”

Ed Carter,
Regional Manager Southeast,
Ethical Property Company



The Foundry provides an ideal environment for all your meeting needs, whether you're after a small space for interviews or large venue for your AGM.

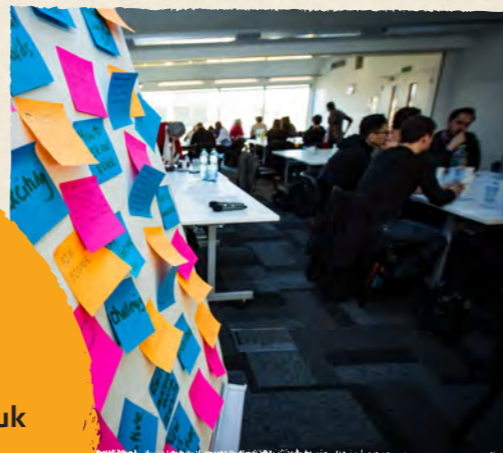
MEETING AND CONFERENCE SPACE FOR HIRE

Vauxhall is centrally located close to the main seats of government power in London, serving as an excellent workspace location for the many campaigning organisations who are our tenants. A short hop across the river from Westminster, The Foundry is positioned as an ideal workspace and conference centre for those speaking truth to power.

The centre has eight fully accessible meeting rooms of various sizes that can be adapted to meet your specific needs. There is free WiFi throughout, and a full range of audio-visual equipment is available for hybrid events.

Our largest space hosts up to 90 people in a theatre style and 75 people in a cabaret style layout.

For more information, contact bookings@aplaceforchange.co.uk



CATERING

Our catering partner, Loveage Project, can provide you with nutritious and delicious meals, snacks, desserts and drinks for any meeting, event or occasion, all delivered directly to your room.

By choosing Lovage Project to be your caterer, you'll be participating in sustainable food and waste practices and supporting communities experiencing food insecurity.

Lovage Project also have an on-site café in the centre, providing snacks and drinks.

You are very welcome to bring in your own catering, if you prefer.

lovageproject.org.uk

THE FOUNDRY PROVIDES AN IDEAL ENVIRONMENT FOR ALL YOUR MEETING NEEDS, WHETHER YOU'RE AFTER A SMALL SPACE FOR INTERVIEWS OR LARGE VENUE FOR YOUR AGM.

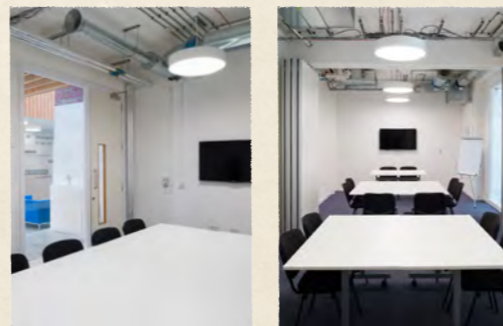


The Foundry is positioned as an ideal workspace and conference centre for those speaking truth to power.



OUR MEETING ROOMS

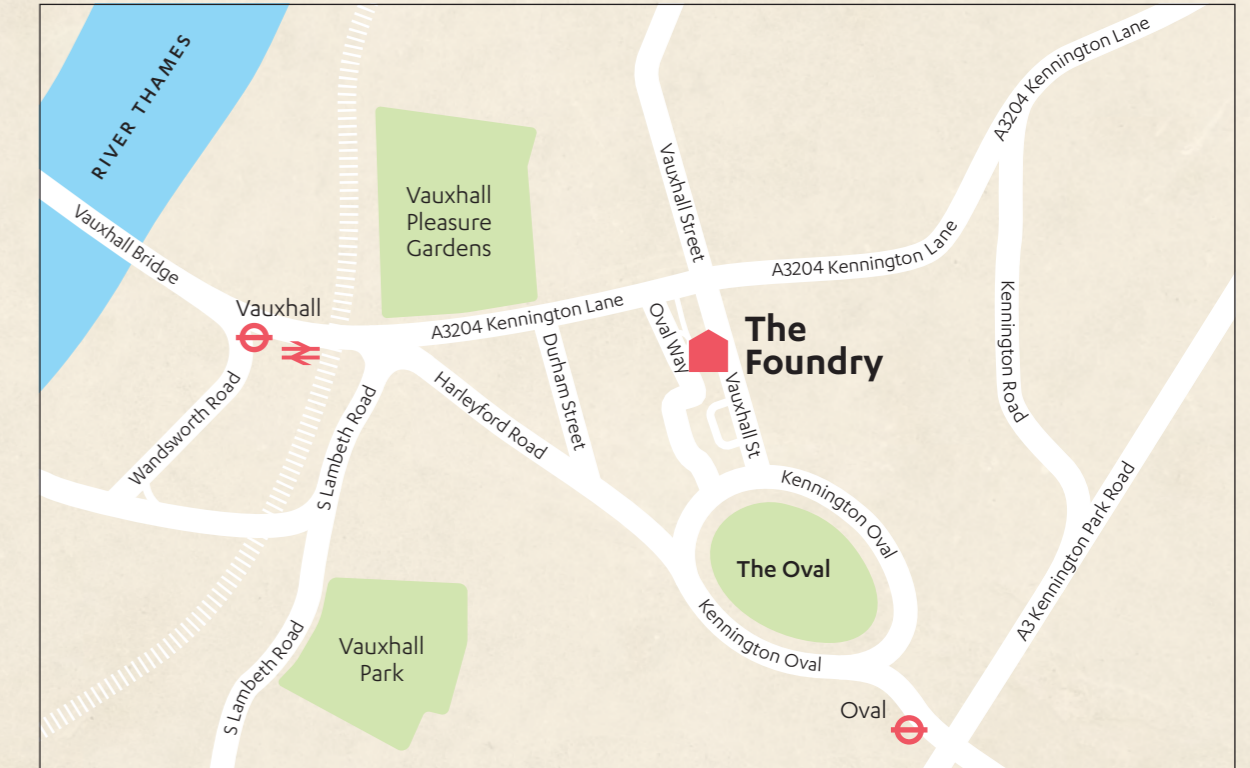
Floor	Room	Size m ²	Cabaret Delegates	Boardroom Delegates	Rows /Theatre Delegates
Ground	Conference Hall	950	45	27	90
	Meeting Room 1	210	-	10	16
	Meeting Room 1A	250	-	10	20
	Meeting Room 2	190	-	10	16
	Meeting Room 1+2	400	25	24	40
	Meeting Room 3	250	-	14	20
Third	Meeting Room 4	473	25	24	40
	Meeting Room 5	470	25	24	40
	Meeting Room 6	440	25	24	40
	Meeting Room 4+5	943	50	48	80
	Meeting Room 5+6	910	50	48	80
	Meeting Room 4+5+6	1383	90	72	90



FIND US

Even by London standards, The Foundry has incredible transport links.

There are many ways to get here, with Vauxhall tube and train station just a few minutes' walk away, and Oval from the other direction. You can also get here by dedicated cycle paths and a variety of bus services.



Tube

Vauxhall Tube Station (Victoria Line): 8-minute walk
Oval Tube Station (Northern Line): 8-minute walk.

Train

Vauxhall Train Station (Southwestern Railway): 7-minute walk.

Bus

Vauxhall Bus Station: 8-minute walk. St Anne's Church (Stop T), Archbishop Tenison's School (Stop B): 3-minute walk.

what3words

///most.goes.player

Parking

We have a limited number of car parking spaces for blue badge holders, and ample bicycle parking.

A PLACE TO WORK, MEET AND MAKE CHANGE HAPPEN

The Foundry

A Place for Change
17 Oval Way London SE11 5RR
020 3752 5470

www.ethicalproperty.co.uk/office-space/south-london/the-foundry

